

Solutions for Professional Knowledge Management

SMW⁺ Semantic Enterprise Wiki

Is Everybody on the Same Page?

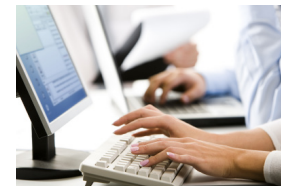
Agile and knowledgeable teams are the ones that get the job done. The wrong choice of collaboration tool, though, can have outsized repercussions. Collaboration tools that are too rigid cannot keep up with changing demands. Critical knowledge can end up being scattered, hard to find, and disconnected from the team processes that it should support.

SMW⁺ is the power tool for agile teams to address these problems.

People and Data Team up in SMW⁺

SMW⁺ is a standards-compliant Semantic Enterprise Wiki. It supports agile collaboration on rich text and data across teams and communities. SMW⁺ combines the query and data management power of a database with the ease of use and collaboration features of a wiki. SMW⁺ includes state-of-the-art wiki features for authoring and publishing articles, and augments them with powerful semantic data management features.

SMW⁺ users can flexibly mix text and data in articles, and enrich their articles with computer-processable information, e.g. “2011/09/17 is the due date of this proposal”, or “this business process step depends on a previous payment step”. This data can support semantically-aware wiki navigation, as well as dynamic reports and visualizations within the wiki or in Microsoft Office applications.



Business rules can automatically synchronize the wiki knowledge base with data from external databases, web services, and the Semantic Web. This unique capability allows users to create and edit custom wiki articles that combine information from the wiki with external data sources.

In addition, users who have been granted appropriate rights can modify the structure of the wiki's knowledge base (the ontology) on the fly, without the need for a database administrator. The basic data models in SMW⁺ are editable in the wiki, and are completely adaptable and customizable as the wiki evolves. Users can dynamically create new classes of data to go with wiki pages, and see their work immediately show up in queries and visualizations.

Applications

SMW⁺ is a versatile Semantic Enterprise Wiki which focuses on the specific needs of teams and communities. SMW⁺ application areas include enterprise content management, integrated collaborative environments and business intelligence.

Features

- **State-of-the-art wiki features:** Create eye-catching articles in the WYSIWYG-editor which can be retrieved by the wiki-search engine. Hide or share articles and data according to your security policy.
- **Intuitive semantic features:** Create data by tagging articles or by using data entry-forms. Visualize data by assembling dynamic reports using the graphical query interface of SMW⁺.
- **Collaborative, agile ontology management:** Collaboratively maintain the ontology with the in-wiki graphical ontology editor. Create business rules to create new knowledge from existing data (requires TripleStore basic or professional).
- **Semantic data integration features:** Integrate data from external heterogeneous data silos thereby making it available to wiki users to generate reports and visualize data (requires TripleStore professional)
- **Start small, grow with use:** SMW⁺ is ready to install and ready to use. Select from a large library of special purpose extensions to fit your situational needs. It scales up to a multi-server enterprise wiki serving thousands of users.

When Collaboration is Critical: SMW⁺ Professional

SMW⁺ Professional includes enterprise and professional-level support as a part of the ontoprise product suite. ontoprise is a leading independent software vendor, specializing in industry-proven Semantic Web infrastructure technologies and products. ontoprise's products support dynamic semantic information integration and information management processes at the enterprise level. With its mature and standards-based products and its extensive experience, ontoprise can deliver a key segment of the upcoming Semantic Web.

Free to Try: SMW⁺ Community Edition

Download SMW⁺ Community Edition^{*} for free and see for yourself how easy it is to install and use. SMW⁺ Community Edition is free software based on Wikipedia's proven MediaWiki platform. Its development is sponsored by Vulcan Inc., Seattle, U.S.A.

^{*} SMW⁺ Community Edition does not include support, updates, fixes, or certain features such as TripleStore professional.

ontoprise GmbH
An der RaumFabrik 29
76227 Karlsruhe - Germany
www.ontoprise.com

Phone: +49 721 509809-0
Fax: +49 721 509809-11
E-mail: info@ontoprise.com

The screenshot displays the SMW+ Semantic Enterprise Wiki interface. At the top, there is a search bar and navigation links. The main content area shows a page titled 'Implementation' with a discussion tab. The page content includes a definition of 'Implementation' and a list of related terms like 'Design', 'Specification', 'Standard', 'Algorithm', and 'Policy'. A modal window is open over the 'Algorithm' link, showing a 'Specify this property' dialog with a dropdown menu set to 'Algorithm'. To the right, there is a bar chart titled 'Collect feedback' showing the percentage of completion for various tasks: Check version (10%), Estimate Task (20%), Estimate Subtask (80%), and Collect feedback (95%). Below the chart is a pie chart titled 'Manpower - Projecteffort' showing the distribution of effort among team members: Heidi (35%), John Doe (40%), Karl (15%), and Smith (10%). The page also includes a 'Types of implementation' section with a list of 'Hot standby' and 'Parallel running'. At the bottom, there is a 'Facts about Implementation' section with a search bar and a 'RDF feed' link.

Further Information...

Do you need additional information? Please contact me, I'd be happy to help you:

Philipp Zaltenbach
Phone: +49 721 509809-55
E-mail: smwplus@ontoprise.com

>> www.smwplus.com <<